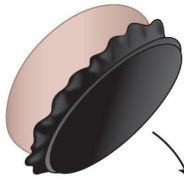
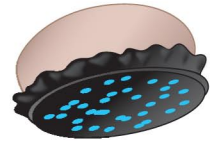


Sterilized velvet-covered support

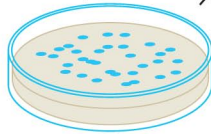


Press sterilized velvet surface on master plate and then on replica plate.

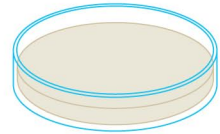
All colonies from master plate transferred.



Master plate  
(medium  
supplemented  
with histidine)

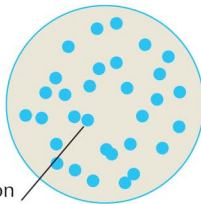


Replica plate  
(no histidine  
in medium).



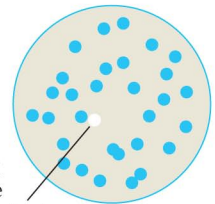
Incubate plates

Master plate



Colony present on  
complete medium  
(nutritionally normal).

Replica plate



Colony missing  
on replica plate  
(nutritionally mutant,  
requires histidine for growth).

**FIGURE 12.21.** Replica plating is a method that allows one to make a copy of the microbial colonies on one plate by carefully placing a piece of material that lifts a small sample from the original plate and can then place this sample onto another plate. In the example shown here, the method is used to identify colonies that require histidine for growth.

12.21, Web source, no longer available