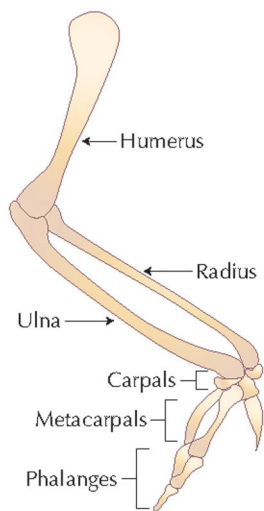


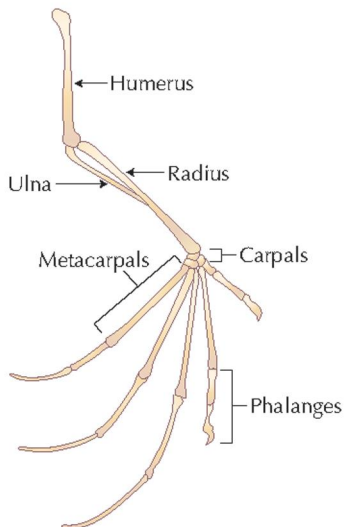
Image not available for online use.

Image not available for online use.

B Bird



Bat



**FIGURE 3.3.** (A) The wings of birds and bats are *analogous*, because they carry out the same function, but are not descended from a common ancestral structure having that function (*left*, great blue heron; *right*, male red bat) (B) The skeletal forelimbs of birds and bats are *homologous*, because they descend from the same structure in their common ancestor.