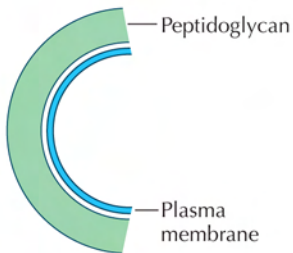


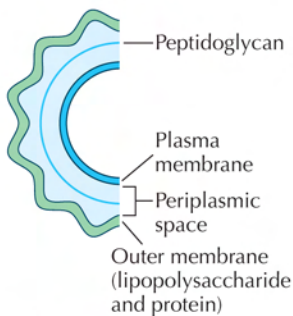
Image not available for online use.

Gram-positive cell wall



Cell wall 20–80-nm thick
One-layer cell wall
>50% peptidoglycan content
Teichoic acids are present
0–3% lipid and lipoprotein content
0% protein content
0% lipopolysaccharide content

Gram-negative cell wall



Cell wall 10-nm thick
Two-layer cell wall
10–20% peptidoglycan content
Teichoic acids are absent
58% lipid and lipoprotein content
9% protein content
13% lipopolysaccharide content

FIGURE 6.2. (Top) Gram stain of mixed bacteria. The *dark purple* indicates gram-positive bacteria and the *cerise* indicates gram-negative bacteria. (Bottom) Schematic diagram and characteristics of the cell wall and membrane of gram-positive and gram-negative cells.